



PRIORITY ERP WAREHOUSE MANAGEMENT SYSTEM (WMS) EXTENDED PROFILE



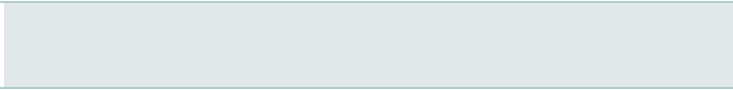
OVERVIEW

Priority's highly scalable ERP warehouse management system utilizes unique customization features and advanced AI-based capabilities that allow companies to automate workflows, operate sophisticated warehousing and distribution processes, and quickly and easily adjust to changing customer demands and market conditions. With Priority's WMS you can streamline your logistics cycle with real-time visibility, resulting in rapid and accurate responses to inventory movements and facilitating holistic control over warehousing operations and resource optimization.

SOFTWARE SPECIFICATION

| | |
|------------------------------------|--|
| OVERVIEW | |
| PRODUCT NAME | Priority ERP Warehouse Management System (WMS) |
| PLATFORM | |
| CLOUD | ✓ |
| INSTALLED | ✗ |
| BUSINESS SECTOR | |
| 3PL | ✗ |
| MANUFACTURING | ✓ |
| RETAIL | ✓ |
| WHOLESALE | ✗ |
| SOFTWARE FEATURES | |
| BARCODING/SERIAL TRACKING | ✓ |
| BILLING | ✗ |
| CROSS DOCKING | ✓ |
| FORECASTING | ✗ |
| INVENTORY MANAGEMENT | ✓ |
| KITTING | ✓ |
| ORDER MANAGEMENT | ✓ |
| PART TRACKING | ✓ |
| PICKING & PACKING | ✓ |
| PRODUCT ROTATION/SHELF LIFE | ✓ |

| | |
|----------------------------------|---|
| PURCHASING | ✓ |
| REAL-TIME DATA | ✓ |
| RECEIVING & PUTAWAY | ✓ |
| REPORTING & ANALYTICS | ✓ |
| RETURNS/RECALLS | ✓ |
| SHIPPING MANAGEMENT | ✗ |
| STAGING | ✗ |
| THIRD PARTY PLUGINS | ✗ |
| WAREHOUSE MAP | ✓ |
| WIRELESS WAREHOUSE | ✓ |
| WORKFORCE/LOAD MANAGEMENT | ✗ |
| YARD MANAGEMENT | ✗ |
| MOBILE | |
| ANDROID APP | ✓ |
| IOS APP | ✓ |
| OTHER CAPABILITIES | ✗ |
| CUSTOMER SIZE | |
| SMALL | ✓ |
| MEDIUM | ✓ |
| ENTERPRISE | ✓ |
| OTHER FEATURES | |
| MULTI WAREHOUSE | ✓ |
| MULTI CURRENCY | ✗ |
| CUSTOMIZABLE | ✗ |



SOFTWARE SCREENSHOTS

Priority
Search customers, parts, documents and more

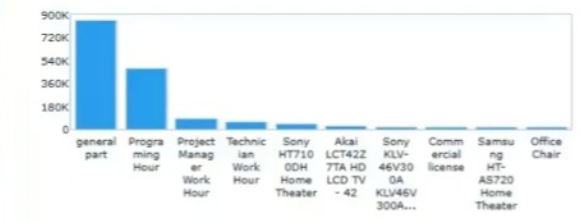
Financials CRM Sales Project Management Purchasing Inventory Customer Service Production Human Resources Office Management
Executive Reports
System Management
The Coffee Company

Good morning

To Do List Assigned to me (99+)

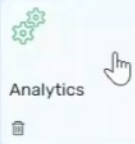
| Item | Status | Priority |
|---|----------|----------|
| PQ25HF000008 Price... - Central... | Pendi... | 0 |
| PQ25HF000009 Price... - Central... | Draft | 0 |
| PQ25HF000010 Price... - Central... | Draft | 0 |
| PQ25HF000011 Price... - Central... | Draft | 0 |

Open Sales Orders



By: Part-Top 10 \$ C2 Past Due

Analytics

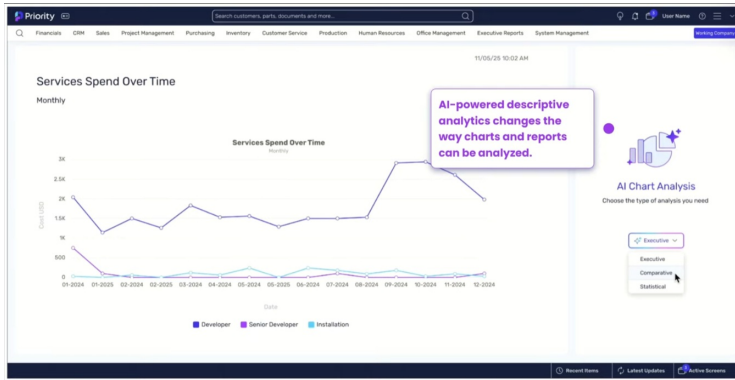


Recent Items

- R Run Report
- F Sales Orders
- F Sales Representatives
- P Analytics
- F To Do List
- F Application Generator
- R Application Links
- F Form Generator
- F Leasing and Company Loans
- F Payment Means

Latest Updates

- Sales Order S025000004 Tech Manufacturing LLC
- Sales Order S025KS000004 Burril Steven



Report Settings

Base Form: Sales Orders

Report Name: sales by customers 2025

Advanced Settings: Share, Active, Pivot Table

Add Rules: Add expression, Multi-Company

Add expression

Field: Function

Search...

| Field | Function | Width | X Axis | Show mine |
|----------------------|--------------|-------|--------|-----------|
| Order Status | ORDERSTATUS | 16 | | |
| Date | CURDATE | 16 | | |
| Price After Discount | DISPRICE | 16 | | |
| Currency | SECURITYCODE | 12 | | |
| % Commission | COMMISSION | 8 | | |
| | | 16 | | |
| | | 3 | | |
| price w/Commission | | 5 | | |
| | | 20 | | |

Cancel Save